

# The Bull Terrier Club of Victoria Inc.

(Incorporated A0026517R)



Bully News  
JUNE 2014

**MEMBERSHIP RENEWALS DUE  
BY JUNE 30TH!**

**Membership renewals may be paid by direct deposit!!**

Bull Terrier Club of Victoria Inc

BSB: 633108

Acc: 125398453

Please email receipt if paying via this method.

Please confirm your VCA number and contact details

Non VCA members must pay levy per person plus yearly fee.

**The Bull Terrier Club of Victoria Inc. Committee 2014.**

<b>President:</b>	Alison Sutcliffe
<b>Vice President:</b>	Sherri Wakefield (Bully Walks/Expos/Fundraising)
<b>Vice President:</b>	Les Greenall
<b>Treasurer:</b>	Jenny Woodsell
<b>Secretary:</b>	Deborah Patterson (Show Secretary)

**\*Please note change of secretary and postal address\***  
**\*New treasurer\***

**ALL CORRESPONDENCE AND ENQUIRY'S TO**

PO Box 1635  
Melton West VIC 3337  
[www.bullterrierclubvic.com](http://www.bullterrierclubvic.com)  
[bullterrierclubvictoria@gmail.com](mailto:bullterrierclubvictoria@gmail.com)

**Committee:**

Ginna Frith (Catering)  
Neil McCracken (Website)  
Kaye McCracken  
Tony DiFresco (Trophies)  
Bob Bolch



**LIFE MEMBERS:**

**VIN AND SHIRLEY HEALAND, ALISON SUTCLIFFE, LES GREENALL,  
CATHY SLUGA, WILMA RAWLINGS, DARYL MUNN, ROSS AND EVE  
BRENNAN, NORM JESSUP AND ROBERT BOLCH.**

---

Every care has been taken in the compilation of this magazine, but the Editor and the club assumes no responsibility for errors or omissions or any effects arising there from. Opinions expressed in these pages, whether in articles or advertisements are not necessarily the opinions held by The Bull Terrier Club of Victoria Inc.

# Presidents Report

*Hello Members,*

Well our Specialty show and Championship show has been and gone and what a day it was. The committee need a huge pat on the back for pulling it off with only 8 weeks to organise it and I thank each and every one of you for the effort on the day. In saying that I would like to apologise, to the exhibitors, for the lateness of the finish of Keith's show. It was organised prior to this committee coming on board and I think that it was not the right time of the year for two shows to be held on the same day. No daylight savings as it was dark at about 5.30pm. The committee will be reviewing this to make sure it does not happen again.

Being on a committee is a thankless job and no one see's what the committee of any club does behind the scenes. The running around organising ribbons, buying food, prizes and trying to make sure it runs smoothly. (Thanks Tony and Ginna) The show secretary for months prior to the show trying to ensure her job is done and nothing is forgotten many phone calls and long nights after work doing catalogues. (Thanks Deb) The picking up of the judges and looking after them prior and post show (Thanks Neil and Kaye). Also the ring and assembly stewards (Thanks Bob and Les) and anyone else I forgot...

We have been operating without a full committee for many months now and that has made the job a bit harder with people taking on second jobs to fill in the holes left by the resignations of committee members.

I know it easy to pick on what isn't done but please bear this in mind that we can only do our best and hopefully with some of the positions on the committee being filled it will free up some time for other things.

To all the committee some who are very new to the jobs that they are doing, like Sherri, thanks for your support and dedication to the breed and the club.

Also on the day people like Ivan, Kerry and Charlie for stepping in and assisting the club with the BBQ and Promotional table.

That said we are now moving forward to the November shows and the planning for our state's Trophy Show weekend next year. We want it to be one that be remembered by all. Finally Deb will keep us posted with dates for some events during the year to raise money and have a day out with your dogs.

Rug up and enjoy your dogs

*Alison Sutcliffe*

## **Bull Terrier Club of SA Inc – Championship Show**

Venue: Royal Adelaide Showgrounds, Wayville, SA – Start Time: Not Before 5.00pm

**ENTRIES CLOSE: 22<sup>nd</sup> of August 2014**

### **Featured Breed At The 2014 Royal Adelaide Show**

<p><b><u>CHAMPIONSHIP SHOW</u></b> <b>DATE:</b> Thursday 11<sup>th</sup> of September 2014</p>
<p><b>JUDGE:</b> Mr E. Ball (UK) "Firecommand Bull Terriers"</p>
<p><b><u>ORDER OF JUDGING:</u></b> Bull Terrier (Miniature) &amp; Breed Classes, Bull Terriers &amp; Breed Classes &amp; General Specials</p>
<p><b><u>ENTRY FEES:</u> \$15.00</b> Babies: Free</p>
<p><b><u>CLASSES:</u> 1-1A, 2-2A, 3-3A, 4-4A, 5-5A, 9-9A, 10-10A, 11-11A &amp; 18-18A Neutered</b></p>

### **SPONSORED BY**



**ENTRIES TO:** The Secretary Mari Lowden 336/1075 Grand Junction Road  
Hope Valley SA 5090 Ph: 0438 283 161. One entry form per dog.

**NO, LATE OR PHONE ENTRIES WILL BE ACCEPTED!**  
**ALL ENTRIES MUST BE ACCOMPANIED BY FEES!**  
**CHEQUES/MONEY ORDERS MADE PAYABLE TO THE BULL TERRIER CLUB OF SA INC**  
**NO RESPONSIBILITY WILL BE TAKEN FOR CASH SENT THROUGH THE POST!**  
**SSAE for acknowledgement of entries – Tickets to be picked up on the day**

**CATALOGUE: \$5.00 (Please include FULL breeding)**

**TROPHIES: Trophy and Sash for all in Show Awards  
ADVANCE Products for all In Show Awards**



**RING STEWARD: Mr P Thompson SHOW MANAGER: Mr A Reading  
DogsSA Rep: Mr R Wittenberg**

Royal Adelaide Show Thursday 11 September, 2014 breed feature, held the same day as our specialty above. General Specials for the Royal are Sunday 14th September. Postal entries for the RAHS close 13 June at 5pm whilst their online entries close Sunday 15 June at Midnight  
<https://entries.theshow.com.au>  
Full information [www.theshow.com.au](http://www.theshow.com.au)

**ACCOMODATION:**  
**HIGHWAY 1 CARAVAN AND TOURIST PARK**  
Port Wakefield Road, Bolivar SA 5108, Phone: 08 8250 3747,  
Email: [info@highway1touristpark.com](mailto:info@highway1touristpark.com) Web site: [www.highway1touristpark.com](http://www.highway1touristpark.com)



Inc No A0018525T

## CANINE MUSEUM FOUNDATION INC.

KCC PARK, 655 WESTERNPORT HIGHWAY SKYE, VICTORIA

# Canine Art Competition

14 December 2014

Exhibits received no later than 6 December 2014

**1<sup>st</sup> Prize Overall \$250**

**Lots of other Prizes**

Exhibiting in the following 3 Categories...

**Painting**

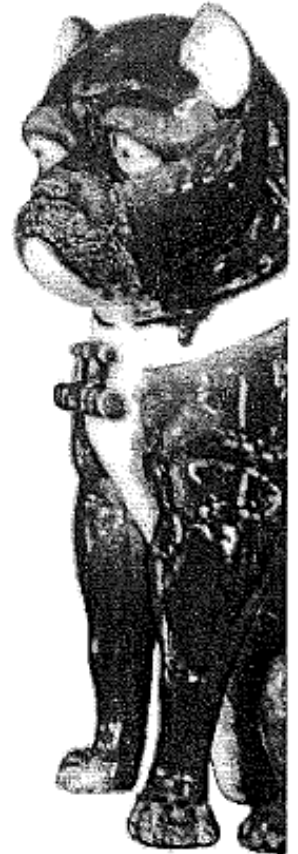
**Sculpture**

**Handiwork**

Showcase your canine-themed art...

**Entry fee \$20 per exhibit**

*Artists may offer their exhibits  
for sale on a commission basis.*



The **Canine Art Competition** will be held in conjunction with Dog's Victoria "**Big Day Out For Dogs**" on 14 December 2014. This is an extraordinary large social and sporting event held annually. Dogs Victoria promotes the event extensively. In 2013 attendees queued far down the road just for entry. Your exhibits will have large and enthusiastic audiences on secure display in our Lyndhurst Room.

**Judging** will be done by a panel of 3 distinguished and qualified experts in their respective fields. Judges Bios, and the Rules and Regulations, Terms and Conditions, and Entry Forms will be posted on the **Canine Museum** Facebook page.

**What better way** to get your beautiful works of art noticed by an enthusiastic attuned audience in perfect ambiance, while participating in the Big Day Out For Dogs extravaganza and celebrating the Museum and our planned extension.

For information contact: **Suzanne Goodchild** at [szzan@bigpond.com](mailto:szzan@bigpond.com)

For general information about the museum please visit our website at:

<http://www.caninemuseum.org.au> or visit us on Facebook

# BULLI'S BEEF



Dear Madam Editor (and my reader in Cleethorpes) Yes. It is proving very difficult for me to get information out to you. I have been here now for five weeks and I'm feeling no better. Keep sending the money though. Someone on the next drip to me... or in other words the next drip to me says you do not even know I am in here and I must tell you all about it. SO. I am in the respite home of a

canine behaviourist. No. It was all very sad really, and the story goes like this. One day I was roosting through the kennels office whilst Her Supremacy was rushing through Asdas with a cue card, a trolley and a bag of cut price sprouts. Anyway I digress. Looking through the kennels office was I and lo and behold I came across the pedigrees box.

"Ah. Hum." Thinks I. "Let me look at my own most illustrious parentage". My mother had often told me that my father was a fine upstanding champion. A winner of a BOB at Crufts and a Best in Show at a Club Championship show. He even won something called the Ormandy Jug. Legion were the tales she told us all as we clung onto the nipple, booting a sibling as far across the whelping box as possible.

I shuffled through all the papers in the pedigree box eagerly looking upon my own ancestry and suddenly there it was, my name on a file. "Bulli's Beef at Supremacy 1CG". With shaking paws I cast open the folder. There was my mother's quite respectable breeding even though she was no show winner. Over the page - here it was my father. "Oh My Lord's Nornih", I screamed out in horror. Standing before my eyes was three generations of unimpressive nonsense, full of hereditary diseases and ailments and breed faults aplenty.

And add this to the fact my father was NOT a champion at all and had never been shown. My advent into the world was as the result of a misalliance, a child born from a stolen kiss! Then over another page there was this photograph of my father which I reproduce here for your amazement. My father was an Alcoholic. I remember in the back recesses of my mind my dam saying something about him being with the AA. I just assumed he sat in one of those yellow cabs and growled at anyone who put their hands on his Masters' spark plug.


Now I have got the full story and, Madam Editor, I trust you will be printing this photo as a warning to all children who think their parents are something they may turn out not to be! My dam has given me the full story.

My father, it transpires, was a local lush who came into the kennels for a week whilst his owner went on holiday. Mum took a shine to him at just the time she was at her ripest. She never saw my father



again after he had had his evil way with her. She did get word from a cousin of hers in Ohio that he had gone across the Pond and was in the Betty Ford clinic. Drying out. In with him was Liza Minicelli - a girl with understandable problems having lived in the shadow of her mother Judy Garland.

This photo of my dad was taken one evening when he was out on the town and was snapped by the paparazzi. Therefore, Madam Editor, it will be some time before I can face my public again and though I gladly give you permission to print the photograph as a warning to others on no account print my letter and blow my cover.

 *Bulli*

*(Editor's note: Bulli, surely after all you have said about ME, I do deserve some revenge. It can be sweet. Hope you are soon feeling better in behaviour therapy. And that your behaviour will improve beyond belief).*

## Principles For Evaluating Dog Gaits

Have you ever filmed your dog and played it back in slow motion? This is a brilliant way to analyse motion. If you aren't near your computer or TV, there are many phone apps that you can download to convert footage taken on your smart phone or ipad into slow motion.

In slow motion, you now have time to focus on the paw, the pastern, back and head motions, over and over. This slow footage analysis can help train your eye to spot the same things at normal speed. By the way, this is also a great way to detect lameness in an animal, when you just can't pinpoint where it is coming from.

*“The difference between an expert and a novice is that the expert perceives instantly what the novice sees eventually”*

To evaluate the particular quality of a breed there is a standard of perfection. However many standards are ambiguous and open to interpretation. All judges move dogs at a trot, yet some standards fail to mention gait. When judges are faced with an ambiguous standard or one with omissions, they should probably select the dog with the structure best capable of performing the purpose of the breed. Some dogs run with endurance, others with speed, some go to ground, others swim, some lug backwards, some pull forwards. In most breeds over a period of time, tradition has established what breeders believe to be the correct trotting style for their breed.

There are many factors to consider:

Up and Down Motion – The backline of all exhibits moves up and down, with maximum height occurring when the rearmost paw is leaving the ground. Breeds designed for maximum endurance at the trot should have a minimum of up and down motion, whereas breeds designed for galloping will have greater up and down motion.

Direction of Spine – In most breeds the spine points in the direction of travel, except breeds that have a roll in the rear (mostly bull breeds) when the spine bends to the side. Bulldogs will travel at a trot leading with one shoulder, much like the canter of a horse, therefore the spine will be a bit off the direction of travel.

Direction of Leg Motion – In most breeds the legs swing back and forth in the direction of travel and in a straight column, without paddling, weaving, cowhocks etc. Exceptions are crooked leg breeds such as Corgis and Bassett Hounds, or Bulldogs whose rear legs swing forward in an arc.

Convergence of Legs – Breeds designed for endurance at the trot should have the legs converge toward the centre line of travel, the standard in the bull breeds states otherwise, and also in some of the longer legged terrier breeds. Many of the shorter legged breeds have the front leg assembly wrap around the body with the front legs slanting in as much as possible.

Flipping up of Pastern – Breeds designed for trotting endurance (collies, sheepdog breeds) have the pastern, when leaving the ground, quickly flip up parallel with the ground. Breeds designed for galloping (greyhound, doberman) bring the pastern

forward at 45 degrees to the ground (they need strong tendons and ligaments). Because of the Fox Terrier standard and tradition in some of the long legged terrors, these breeds bring their pasterns forward with a minimum bend at the pastern joint.

Height of Paw Lift – Once again, breeds designed for the endurance trot should never bring the front paw higher than the pastern joint is from the ground in the standing position. Many toy breeds do so for aesthetic tradition.

Reach – This is the distance a paw extends in front of the forechest while in the air. Set down reach is the distance a paw is in front of the forechest at the time it is set on the ground. The only time a paw can aid in forward push is when it is on the ground, set down reach is the important consideration. Although long reach is looked upon favourably, the excess reach is actually wasted energy. The swifter a dog moves the more reach is necessary, handlers often move dogs faster to attain it but reach should be judged relative to the speed of travel.

Backline – During the trot, backlines (toplines) vary from level (Afghan, Basenj, Retriever, Poodle) sloping towards the front (Old English Sheepdog, Dandie Dinmont Terrier), sloping towards the rear (German Shepherd Dog, pointer) and arched (Whippet, Bedlington Terrier).

### The Trot and The Dog's Origin

Most authorities agree that the domestic dog evolved from similar ancestors of wolves, with minor contributions from jackals. True wolves are basically carnivores but are capable of scavenging, eating berries, fruits and vegetables. When travelling, they run with great endurance and fair speed, and surpass most mammals in this respect. Natural (undistorted for a special purpose) dogs should also excel at the trot.

In the dry plains area, by selective breeding, people developed a flexible-backed domestic dog fast enough to catch most prey. Speed was not a natural development in wolves, man was responsible for the change in dogs.

Running animals, in the process of evolving speed and endurance developed these special characteristics.

1. Legs that move in a single plane
2. Muscles that tend to concentrate in the upper portion of the legs
3. Legs that are longer
4. Paws and leg extremities that are as small as possible
5. An increase in the effective number of joints that are used in running
6. The back is used by sighthounds in running.

The most frequent statement in the biological world is "Form Follows Function". The function of dogs to meet our needs (herding, speed, catch game, bull baiting, going to ground, retrieving, swimming, fighting) changed dogs form. With a change in form, came a change in the efficiency and style of trotting.





# PETBARN



*Everything for Pets*

I would like to give a big thanks to Mornington Pet Barn for donating the proceeds of their BBQ to us on 3<sup>rd</sup> May. Also a big thanks to the local members who showed up with their bullies to help promote the breed in the unpredictable weather! We made a some extra cash for the club, and we also made a few fans!

## BULLY WALK & BBQ

### 29<sup>TH</sup> JUNE 2014

WHERE: FLAGSTAFF GARDENS, CORNER OF WILLIAM ST AND LATROBE ST



TIME: 11am

Come and join us for a sausage sizzle at the BBQ area and a walk around the beautiful gardens.

Free parking is available. Check our facebook page the night before in case of inclement weather.



Please bring small change

# CHAMPIONSHIP SHOW RESULTS MRS ANGELA GOODWIN (OUNSDALE)

BIS - CH Satori Magic Mike  
RU BIS - Bulroarus Womaniser  
Dog CC - Ch Satori Magic Mike  
Reserve CC - Bulroarus Womaniser  
Bitch CC - Amatol Ashanti  
Reserve CC - Bulroarus Ginger Bread  
Baby puppy in show - Bullroy The One  
Opposite - Hulia The Dame  
Minor Puppy in Show - Impie Glitterbug  
Opposite Minor Puppy - N/A  
Puppy in Show - Bulroarus Womaniser  
Opposite Puppy in show - Jacamar Ruby Rose  
Junior in Show - Amatol rocky  
Opposite Junior in show - Bulroarus Ginger Bread  
Intermediate in Show - Ch Satori Magic Mike  
Opposite intermediate in show - Amatol Ashanti  
Australian Bred in show - Ch Wakatang Nowhere Man  
Opposite Australian Bred in show - Bullpatchy River Dream  
Open in Show - Impie Crackerbox  
Opposite Open in Show - Jacamar Dream Time



**CHAMPIONSHIP SHOW WINNERS  
BEST IN SHOW & DOG CC  
“SATORI MAGIC MIKE”**



**RUNNER UP BEST IN SHOW &  
RESERVE DOG CC  
“BULROARUS WOMANISER”**



**CHAMPIONSHIP SHOW WINNERS**  
**BITCH CC**  
**“AMATOL ASHANTI”**



**RESERVE BITCH CC**  
**“BULROBUS GINGERBREAD”**



# SPECIALTY SHOW RESULTS MR KEITH GOODWIN (OUNSDALE)

Results from the Bull Terrier Club of Victoria Keith Goodwins Specialty show 17th May 2014.

BIS - Bulroarus Womaniser

RUBIS - Amatol Rocky

Best Dog - Bulroarus Womaniser

Reserve Dog - Amatol Rocky

Best Bitch - Amatol Ashanti

Reserve Bitch - Bullroy High Maintenance

Baby puppy in show - Bullroy The One

Opposite Baby Puppy - Braxstar Fat Bottom Girl

Minor Puppy in show - Hellofabull Royal Bliss

Opposite Minor Puppy - N/A

Puppy in show - Bulroarus Womaniser

Opposite Puppy in Show - Jacamar Ruby Rose

Junior in show - Amatol Rocky

Opposite Junior in Show - Bulroarus Ginger Bread

Intermediate in show - Amatol Ashanti

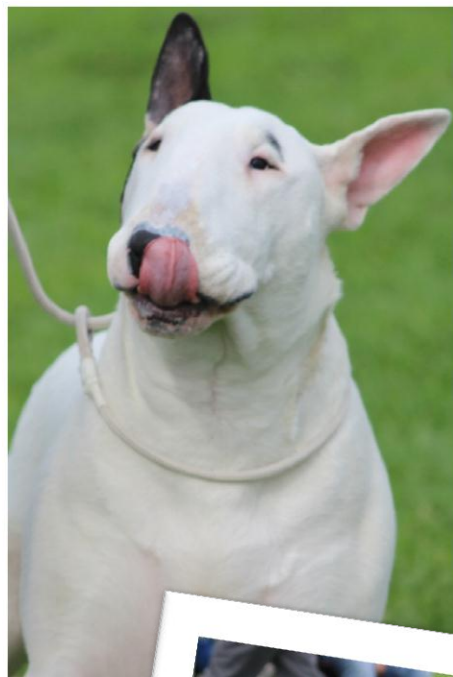
Opposite Intermediate in Show - Stardom Devils Seed

Australian Bred in Show - Ch Wakatang Nowhere Man

Opposite Australian bred in show - Hellofabull Naughty Alice

Open in show - Bullroy High Maintenance

Opposite Open in Show - Hellofabull Night Fury



**SPECIALTY SHOW WINNERS  
BEST IN SHOW & DOG CC  
“BULROARUS WOMANISER”**



**RUNNER UP BEST IN SHOW &  
RESERVE DOG CC  
“AMATOL ROCKY”**



Check out more pics on our web  
page or facebook site.

**SPECIALTY SHOW WINNERS  
BITCH CC**

**“AMATOL ASHANTI”**



**RESERVE BITCH CC**

**“BULLROY HIGH MAINTENANCE”**



## SGM MINUTES FROM 8/12/13



### The Bull Terrier Club of Victoria Inc

A0026517R

Affiliated with the Victorian Canine Association Inc.  
& The National Bull Terrier Council (Australia).

President: Sharelle Humphrey  
Secretary: Alison Sutcliffe

PO Box 953  
Strathfieldsaye Vic 3551

Meeting	Venue	Date
Special General Meeting	Bulla	08/12/13

Chair	Meeting Opened
Sharelle Humphrey	12.35 pm

**Members in Attendance:** Sharelle Humphrey, Shane Humphrey, Alison Sutcliffe, Neil McCracken, Kaye McCracken, Lisa Gasperotti, Christine Cook, Bill Campbell, Bec Campbell, Sherri Wakefield, Bernadette Marshall, Ivan Langerak, Adam Combes, Ginna Frith & Deborah Patterson

**Apologies – L Pride**

Moved: D Patterson

Seconded: B Marshall

#### 1. Special Business:

##### 1.1 Special Resolution:

To adopt the revised Rules of the Bull Terrier Club of Victoria Inc. in line with the Incorporations Reform Act 2012.

Moved: Christine Cook

Seconded: Lisa Gasperotti

*Carried unanimously*

##### 1.2 Election of Committee

1 x Secretary Alison Sutcliffe

Moved: Shane Humphrey

Seconded: Neil McCracken

*Carried unanimously*

1 x Vice President Lisa Gasperotti

Moved: Shane Humphrey

Seconded: Bill Campbell

*Carried unanimously*

1 x Ordinary Committee Sherri Wakefield

Moved: Alison Sutcliffe

Seconded: Neil McCracken

*Carried unanimously*

Meeting Closed at: 12.45 pm



## THE BULL TERRIER CLUB PERPETUAL TROPHIES

The other day I was wandering through the KCC Park Museum as I had some time to kill at an all breeds show. A number of years ago, in my previous tenure as secretary, the committee decided to purchase a cabinet for the club inside the museum. The intent was to house some of our perpetual trophies that have been moved from pillar to post and were stored in various committee garages and wardrobes and were starting to get damaged and lost. If you haven't seen our cabinet, next time you are at the Park, go in and have a look. Entrance to the museum is free and the museum looks absolutely amazing. I took some pics of our cabinet below.



I asked one of our life members, Bob Bolch, to tell me about some of the trophies....

“Neil McCracken sent me an email the other day, it contained a photo showing a couple of figures, one of whom was in an Army uniform and he asked if I could shed some light on what was taking place. As it was a copy of a photo, I had difficulty with it until I realized its significance. The soldier was a Captain in the SAS (Special Air Service), one of the best of the best. The Trophy was a memorial to the brother of the Secretary of the Coloured Bull Terrier Social Club, killed whilst serving in the SAS.

The picture depicts me taking delivery of one of several trophies donated to the BTCV by the Coloured Bull Terrier Social Club after they disbanded. This club was a breakaway from The Bull Terrier Club (Sydney), at the time, many Bull Terrier owners had joined the alternative; and the Coloured Bull Terrier Social

Club of New South Wales enjoyed a large following. With the formation of the Bull Terrier Club of Victoria as well as the South Australia Bull Terrier Club and pressure from the RASV they decided to disband.

The Secretary whose brother had been killed whilst serving in the S.A.S. asked if we would accept the perpetual trophies and put them to good use on his behalf. I was not a Committee member at the time but as I was going to Sydney to view the 1983 "Top Dog" Championship Show; I agreed to receive them on behalf of the BTCV.

The ex-Secretary of the Club arranged for a serving member of the SAS, a Captain, to hand them over on his behalf. The Top Dog Championship was a triumph for Victoria that year as Robyn Black received the Best Puppy (Bitch Challenge) and Best Exhibit for her Bitch Selcum Shikaree, Bev Grace received Best Australian Bred (Dog Challenge) Best Opposite with Kiljarka Kalpa. The Oldridges won Best Baby Puppy with Prigea Apodis and Opposite Puppy with Prigea Princeling.

In closing, I would like to say a few words about the placement of many of the BTCV Perpetual Trophies in the Dogs Victoria Museum. These trophies; some of which have been donated by founding members of the BTCV, were to serve as perpetual trophies for the Points Score Competition and the Club Championship Show. Successive Committees of the BTCV have decided to discontinue the Points Score Competition, believing it was too complex, as some of the contestants did not bother to supply information to the Points Score Officer.

As an analogy consider the Regent Trophy, the Ormandy Jugs, the Monkerly Stud Dog Trophy, the American Silverwood Trophy, the Australian Trophy Show with its Ormandy and Souperlative Boxes, all of which are the top awards in various countries. These awards came into existence because enough Bull Terriers in many states and regional Clubs were being shown to warrant a competition designed to pick the best of the best, and to this end, these aforementioned trophies came into existence."

Robert C Bolch JP  
**Bull Terrier Club of Victoria Inc. Life Member**

**Coming up to our club's 40<sup>th</sup> anniversary, if you have a story from our club's history, please contact the club secretary. And don't forget to check out our club's website, Neil McCracken has been busily working away on it. It is looking fantastic, and there are lots of interesting new pages to look at and some more stories about our trophies.**

## Odd Canine Fact – The Violet Gland

Ever wondered what the funny bald patch is at the top of your bully's tail? Sometimes it is covered with hair and you don't notice it, then it resurfaces! Well your wondering is over, this bald patch is not the result of your bully chewing or sitting awkwardly on his tail as I have heard many people comment. It is actually a gland.

The violet gland or supracaudal gland is an important gland located on the upper surface of the tail of certain mammals, including European badgers and canids such as foxes, wolves and the domestic dog and cat. It is used for intra species signalling, scent marking, and contributes to the strong odor of foxes in particular.

Although it secretes a mixture of volatile terpenes similar to those produced by violets (hence the name), the chemicals are produced in much greater quantity than in flowers and the resulting strong smell can be quite unpleasant. Like many other mammalian secretion glands, the violet gland consists of modified sweat glands and sebaceous glands.

In the European badger, the secretions of the violet gland contain a high concentration of lipids, with a composition that varies seasonally. In foxes, the violet gland is found on the upper surface of the tail, at roughly one-third of the tail's length from the body. Due to its role in steroid hormone metabolism (and possibly production), foxes cannot be "de-scented" by removing this gland. For unknown reasons, the gland's secretions are fluorescent in ultraviolet light; this may result from the presence of carotenoids.

In dogs, the violet or supracaudal gland is found approximately above the 9th caudal vertebra. The violet gland secretes protein and hydrophobic lipids, has wide excretory ducts, is connected with coarse hairs, devoid of cysts, and has no sexual dimorphism. It is often referred to as "stud tail", despite the fact that it appears in both genders.

Some dogs exhibit a bald spot at the side of the violet gland. In most cases, the hairs grow again automatically. In the spring when the nose will be 'sexually stimulated/aroused' through the air from the many females in heat this process can be repeated. Puberty of the dog also plays a role.

There isn't much you can do to stop the hair loss, it usually grows back by itself with no intervention, however take note that the bare, unprotected skin does not get too dry.

# The Bull Terrier Club of Victoria Inc.

## UPCOMING EVENTS

BULLY WALK & BBQ – 29<sup>TH</sup> JUNE (FLAGSTAFF GARDENS)

SHOW & FUN DAY – 27<sup>TH</sup> JULY (BULLA)

ROYAL MELBOURNE SHOW (20<sup>TH</sup> SEP TO 27<sup>TH</sup> SEP)

OPEN SHOW & FUN DAY – **EARLY OCTOBER (BULLA) NEW  
DATE TO BE ADVISED**

HALLOWEEN BULLY WALK & BBQ – OCTOBER (DATE TBA)

**CHAMP & SPECIALTY SHOW – NOVEMBER 1<sup>ST</sup> & 2<sup>ND</sup>**

**MOIRA STEWART & JAMIE WATKISS**

**NOTE: VENUE CHANGED TO BULLA**

BIG DOGS DAY OUT & BULLY WALK & FUN DAY – 14<sup>TH</sup>  
DECEMBER (KCC)

## 2014 Six Month Raffle

The BTCV currently has raffle tickets for sale

**1<sup>st</sup> prize - \$250 Bunnings or Coles/Myer voucher**

**2<sup>nd</sup> prize - \$100 Bunnings or Coles/Myer voucher**

**3<sup>rd</sup> prize - \$50 Bunnings or Coles/Myer voucher**

**\$2 per ticket**

**Tickets available at all our events, or contact secretary to purchase.**

**If you would like to sell a book for us, please contact the secretary  
and we will post one out to you. 25 tickets per book.**

**Raffle will be drawn on Sunday 2<sup>nd</sup> November at our Specialty show**

## The Bull Terrier Club of Victoria Inc.

### Statement of Revenue & Expenditure

Balance as at 30/12/2013 \$1706.66

#### REVENUE:

Membership	\$
Champ/Spec entries	\$
Open show entries	\$
Catalogues (open)	\$
Donations	\$
M/Comps	\$ 130.00
Raffle	\$ 134.00
Action	\$
Promo Sales	\$
Food & Drinks (BBQ)	\$ 105.00
Misc	\$
<b>Total Revenue</b>	<b><u>\$ 369.00</u></b>

#### EXPENDITURE:

N/letter printing	\$
Postage	\$
Food/Drinks	\$
Trophies	\$
Sashes (Oct shows)	\$
Cham/Spec show	\$
M/Comp& Fun days	\$
Open Show	\$
Promo Items	\$
Raffle	\$ 25.00
VCA (Open show surcharges)	\$

**Total Expenditure** **\$ 25.00**

Balance as at Jan 31.01.14 \$1706.66

#### **Cheques not presented**

08.12.13 00354 \$ 14.20, 19.01.14 000359 \$166.00

30.01.14 000360 \$ 153.30, 30.01.14 000361 \$ 49.50 = \$ 383.00

Term Deposit \$8409.16 due to mature 13.04.14 interest rate@ 3.45%

## **The Bull Terrier Club of Victoria Inc.**

### Statement of Revenue & Expenditure February

Balance as at 31/1/2014 \$1,706.66

#### **REVENUE:**

Membership	\$
Champ/Spec entries	\$
Open show entries	\$130.00
Catalogues ( <i>open</i> )	\$
Donations	\$
M/Comps	\$
Raffle (Lindt Hamper)	\$134.00
Action	\$
Promo Sales	\$
Food & Drinks (BBQ)	\$105.00
Misc	\$
<b>Total Revenue</b>	<b><u>\$369.00</u></b>

#### **EXPENDITURE:**

N/letter printing	\$
Postage	\$
Food/Drinks	\$
Trophies	\$153.00 (Faye Willox Oct 2013)
Sashes ( <i>Oct shows</i> )	\$
Cham/Spec show	\$
M/Comp& Fun days	\$
Open Show	\$
Promo Items	\$
Raffle	\$ 25.00
VCA ( <i>Open show surcharges</i> )	\$ 57.00
Misc	\$ 166.00 (meeting room charges)
NBTCA	\$ 70.00
Room Hire	\$ 49.50
<b>Total Expenditure</b>	<b><u>\$520.50</u></b>

Balance as at 28.02.14 \$1,637.16

Term Deposit \$8409.16 due to mature 13.04.14 interest rate@ 3.45%



**The Bull Terrier Club of Victoria Inc.**

## **MEMBER'S COMPETITION**

**Judge: Felicity Summers**

**Venue: Bulla Exhibition Centre, 5 Uniting Lane, Bulla**

**Date: Sunday 27<sup>th</sup> July 2014**

---

**Classes: Dogs 1, 2, 3, 4, 5, 11**

**Bitches 1a, 2a, 3a, 4a, 5a, 11a**

**Veterans Desexed Champion**

**Entry Fee: \$5.00 per entry. Entries taken on the day.**

**Judging Time: 10:30am**

**Children's events/handling classes will be held dependant on numbers.**

**Break for lunch with our famous Bully BBQ, drinks available.**

---

**Followed by fun day – breeder judge to be advised.**

# BlackHawk

PROFESSIONAL

Ingredients that matter...



## Holistic super premium pet food Australian Made & Owned

- Essential omega 3's & 6's
- No Artificial colours
- No Artificial flavour
- No Artificial Preservatives
- Non GMO
- Hormone free
- Antibiotic free
- Complete and Balanced
- Added Emu Oil



Please visit our website for retail outlets and wholesale information:

[www.blackhawkpetcare.com](http://www.blackhawkpetcare.com)





# The Bull Terrier Club of Victoria Inc.

Affiliated with the Victorian Canine Association Inc. & The National Bull Terrier Council (Australia).

## APPLICATION FOR MEMBERSHIP

I / we the undersigned wish to put forward my / our names as prospective member/s of THE BULL TERRIER CLUB OF VICTORIA INC. and hereby agree to abide by the rules, bi-laws, Constitution and Code of Conduct of the Club and the VCA, and subscribe here with to the following declaration of honour.

**"All members of The Bull Terrier Club of Victoria Inc. do undertake not to breed from or exhibit or cause to exhibit any deaf Bull Terriers and furthermore that they will support the Club in every way practicable to stop the breeding of deaf Bull Terrier dogs or bitches owned by members or anyone else. Members also declare that they will not offer for sale or be anyway concerned in the sale of offering for sale deaf Bull Terriers. Members also agree that they will neither bred from nor offer for stud any animal which has suffered or is suffering from any inheritable painful defect."**

**NB: The club considers that any dog that cannot hear perfectly to be deaf:**

Applicants will be elected by vote of the committee for approval at the first possible Committee Meeting after receipt.

Applicant/s:

Name: \_\_\_\_\_

Address: \_\_\_\_\_

Postcode \_\_\_\_\_ Phone: \_\_\_\_\_ Email: \_\_\_\_\_ Occupation \_\_\_\_\_  
(Optional)

Desire to become a \_\_\_\_\_ member/s of The Bull Terrier Club of Victoria Inc.

Signature/s of Applicant/s.

\_\_\_\_\_ Date: \_\_/\_\_/\_\_

Proposer: I, \_\_\_\_\_ a member of The Bull Terrier Club of Victoria Inc. nominate the Applicant/s who is / are personally known to me.

Signature of Proposer: \_\_\_\_\_

VCA Membership Number: \_\_\_\_\_

Membership Category	Annual Fee	Joining Fee	Total Payable
Single	\$15.00	\$15.00	\$30.00
<b>NON VCA MEMBERS ADD PER PERSON</b>	\$7.50		
Dual (Resident at same address)	\$25.00	\$15.00	\$40.00
Junior (under 15)	\$5.00	\$5.00	\$10.00
Junior (under 5)	\$2.00		\$2.00

Note only fees paid after 1<sup>st</sup> April will carry onto the following year. The financial year ends 30th June and a rejoining fee is required if fees are paid after 31<sup>st</sup> July. No joining fee is applicable under the 2001 Breeder Membership drive or from interstate applicants if they are a member of their state Bull Terrier Club. Please supply a stamped addressed envelope for return of your membership card and receipt.

**Send Applications to: The Secretary PO Box 2228, Bayswater VIC 3153**